

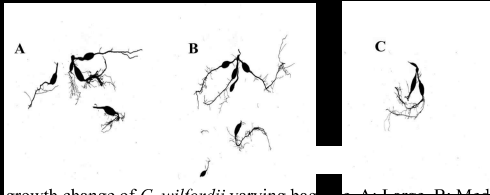
Forestry Cultivation of *Cynanchum wilfordii* using Grow bag

Kwan Been Park^{1*}, Seong Hyeon Yong², Do Hyeon Kim¹, Myung Suk Choi^{1,2}

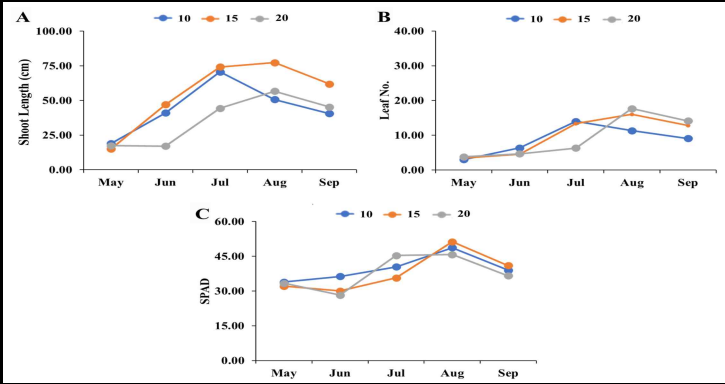
¹Division of Environment Forest Science, Gyeongsang National University, ²Institute of Agriculture of Life Science, Gyeongsang National University

Introduction

Bag size	Total length of roots (cm)	Surface area of roots (cm ²)	Volume of roots (cm ³)	Average diameter (mm)
Large	139.98	47.47	1.281	1.0796
Medium	180.56	51.17	1.154	0.9022
Small	85.45	22.39	0.467	0.8342

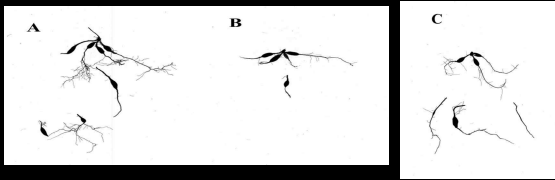
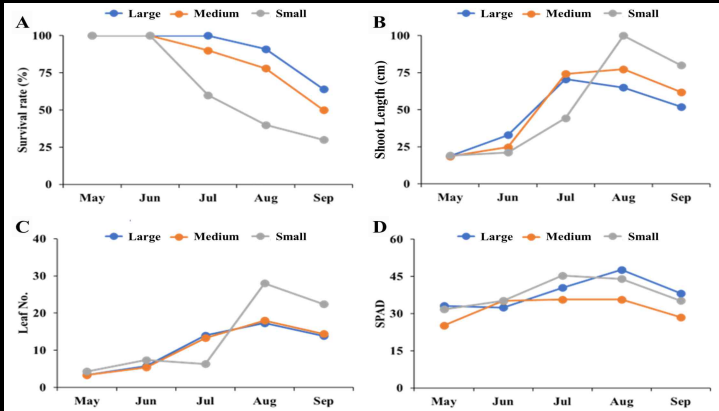


Materials and Methods



No. of seedling	Total length of roots (cm)	Surface area of roots (cm ²)	Volume of roots (cm ³)	Average diameter (mm)
10	220.12	56.05	1.136	0.8106
15	59.01	24.45	0.806	1.3190
20	129.78	36.41	0.813	0.8931

Result



Conclusion