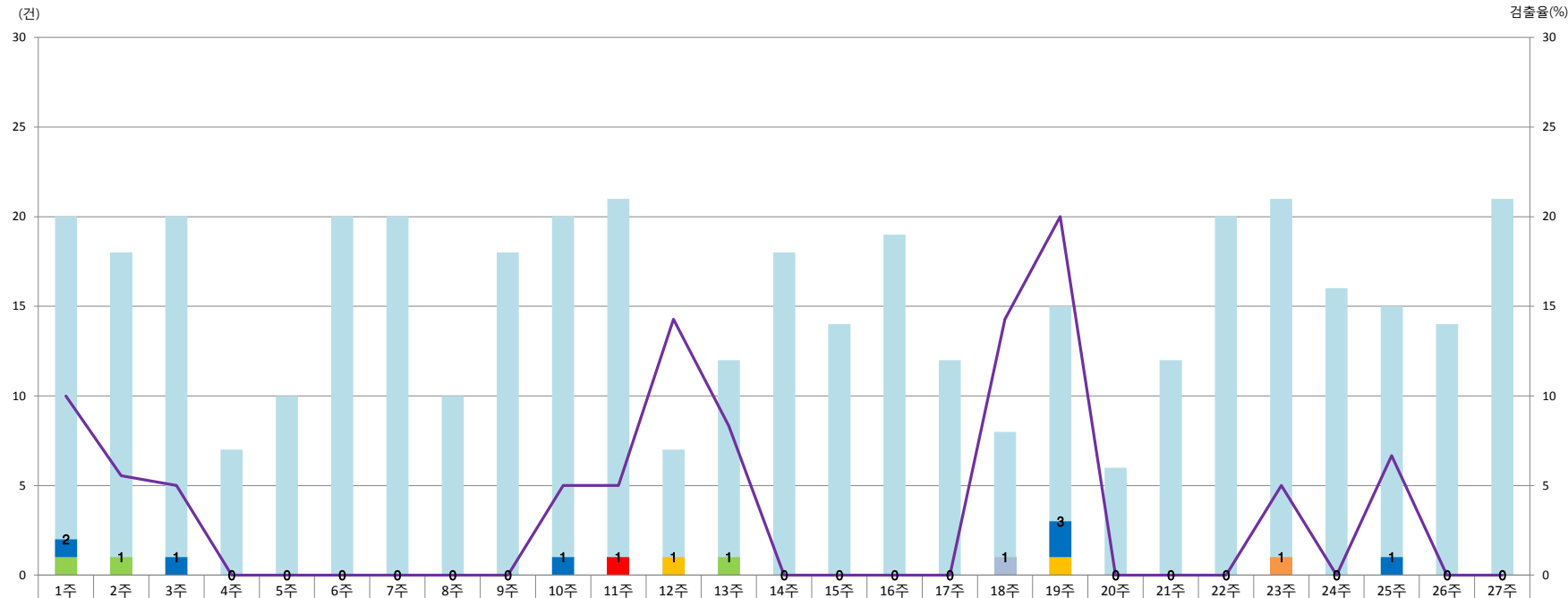


2018년 급성설사 감시사업 (세균)



검사건수	20	18	20	7	10	20	20	10	18	20	20	7	12	18	14	19	12	7	15	6	12	20	20	16	15	14	21
Campylobacter spp.																							1				
Vibrio parahaemolyticus																											
Y.enterocolitica																											
L.monocytogenes																											
Salmonella spp.											1																
Shigella spp.																											
S.aureus																		1									
E.coli	1		1							1									2						1		
Cl.perfringens	1	1											1														
B.cereus												1							1								
검출율(%)	10.0	5.6	5.0	0.0	0.0	0.0	0.0	0.0	0.0	5.0	5.0	14.3	8.3	0.0	0.0	0.0	0.0	14.3	20.0	0.0	0.0	0.0	5.0	0.0	6.7	0.0	0.0
검출건수	2	1	1	0	0	0	0	0	0	1	1	1	1	0	0	0	0	1	3	0	0	0	1	0	1	0	0